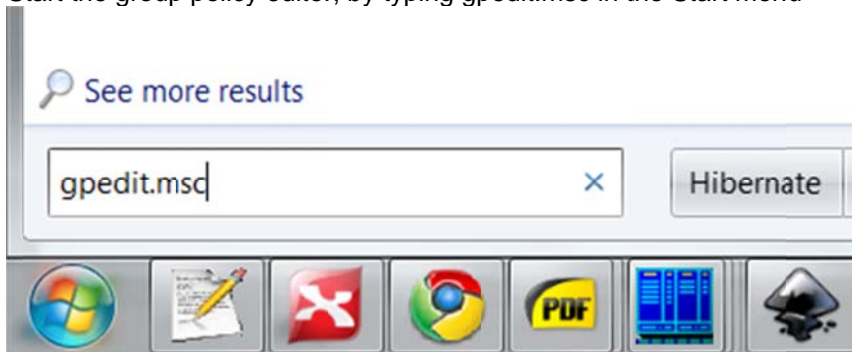
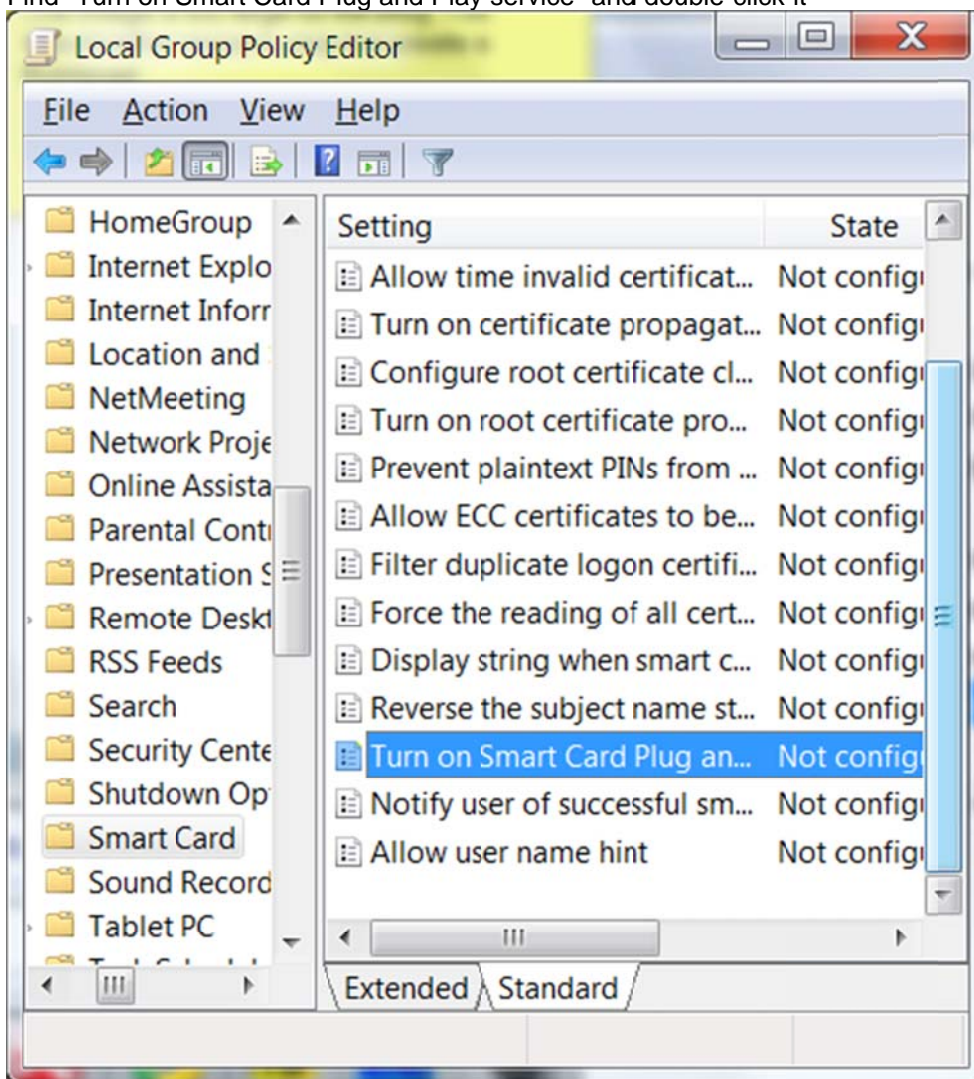


How to disable smart card plug and play on Windows 7

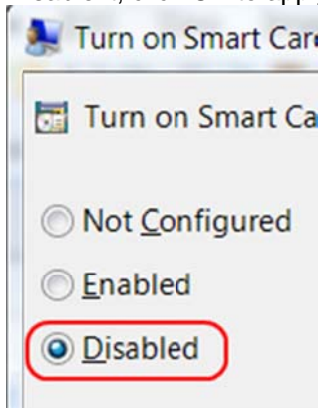
1. Start the group policy editor, by typing gpedit.msc in the Start menu



2. Go to Computer Configuration\Administrative Templates\Windows Components\Smart Card
3. Find "Turn on Smart Card Plug and Play service" and double-click it



4. Disable it, click OK to apply the new setting



After you reboot the system, the pop-ups that show up every time you plug in a smart card will be gone.

Another way to disable smart card plug and play on Windows 7 is to run this from the command line, with admin rights: